

# LARIMER COUNTY 2015 BUDGET BRIEF

LARIMER COUNTY – COMMITTED TO EXCELLENCE

ADOPTED OPERATING BUDGET	\$225,331,718
DISASTER RESPONSE & RECOVERY	\$33,617,259
<b>TOTAL ADOPTED BUDGET (WITH NON-OPERATIONAL GOVERNMENTAL ACCOUNTS)</b>	<b>\$390,299,431</b>

## HUMAN & ECONOMIC SERVICES



\$58,307,478

Disaster Recovery — \$47,164

### Healthy People. Thriving Economy.

- 4-H Family & Consumer Education
- Child & Foster Care
- Emergency Preparedness & Response
- Employment & Training Services
- Enterprise Zone Support
- Environmental Pollution Control
- Financial Assistance Benefits
- Restaurant Inspections
- Maternal & Child Health Services
- Mental Health Support
- Public Health
- Senior & Disabled Services
- Veteran Services
- Youth Corps

## PUBLIC SAFETY SERVICES



\$67,322,479

Disaster Recovery — \$0

### Safe Communities. Impartial Justice.

- Alternative Sentencing
- Animal Control
- Code Compliance
- Community Corrections
- Coroner
- Crime Prevention, Statistics & Reporting
- Emergency Management
- Jail Operations
- Law Enforcement in Unincorporated Areas
- Public Prosecution
- Wildfire Fire Management

## PUBLIC RECORDS & INFORMATION SERVICES



\$13,233,521

Disaster Recovery — \$0

### Open Data. Transparent Processes.

- Birth & Death Certificates
- Elections & Voter Registration
- Marriage Licenses
- Property Value Assessment & Tax Collection
- Public Records
- Vehicle Registration

## STRATEGIC LEADERSHIP & ADMINISTRATIVE SERVICES



\$30,371,642

Disaster Recovery — \$2,323,372

### Engaged Service. Efficient Government.

- Budgeting
- Communications
- Elected & Executive Management
- Facilities
- Human Resources
- Information Technology
- Finance, Accounting & Purchasing
- County Attorney
- Performance Measurement
- Strategic Planning

## COMMUNITY RESOURCES, INFRASTRUCTURE & PLANNING SERVICES



\$56,096,598

Disaster Recovery — \$31,246,723

### Quality Infrastructure. Conscientious Planning.

- Building Inspections
- Community Planning & Development
- County Parks & Trails
- Development Planning
- Engineering
- Forestry
- Landfill & Solid Waste Management
- Open Spaces
- Road & Bridge Maintenance & Repair
- Rural Lands
- The Ranch

## NON-OPERATIONAL GOVERNMENTAL ACCOUNTS



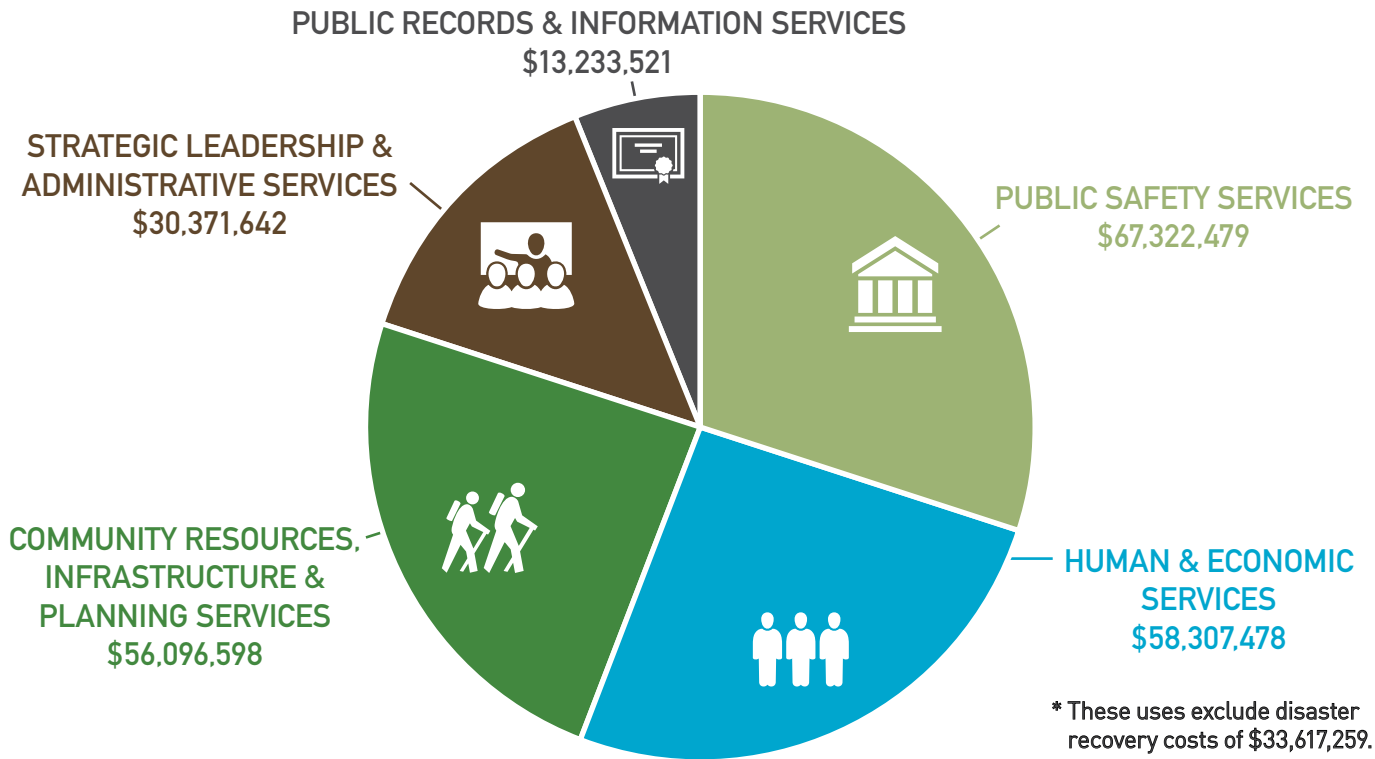
\$131,350,454

Disaster Recovery — \$0

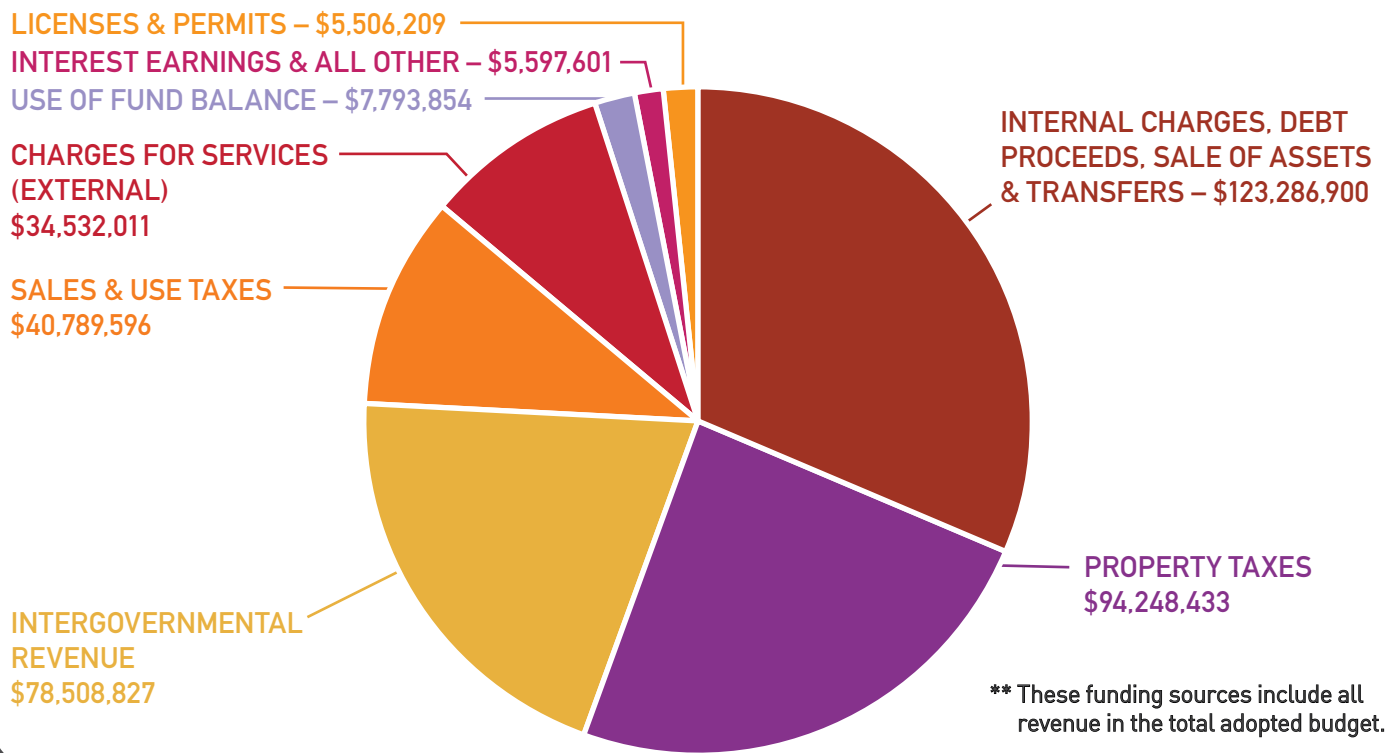
### Funds Accountability. Financial Oversight.

- Debt Service Funds
- Federal & State Funds
- Risk Management
- Sales Tax Fund
- Self-Insured Benefits Funds
- Transfers Between Funds & Departments

# 2015 ADOPTED USES OF FUNDS\*



# 2015 ADOPTED SOURCES OF FUNDS\*\*



**HUMAN & ECONOMIC SERVICES .....\$58,307,478**

Economic Development .....	139,173
Cooperative Extension .....	719,531
Health & Environment .....	8,800,344
Human Services .....	40,911,596
The Ranch — 4-H & Community Building.....	1,137,420
Workforce Center .....	6,599,414

**PUBLIC RECORDS & INFORMATION SVCS .....\$13,233,521**

Assessor .....	4,102,291
Clerk & Recorder .....	7,430,482
Public Information .....	270,706
Surveyor .....	6,132
Treasurer.....	1,423,910

**COMMUNITY RESOURCES, INFRASTRUCTURE & PLANNING SERVICES ..... \$56,096,598**

Citizen Resources.....	862,334
Code Compliance & Building .....	1,751,357
Development Planning.....	596,989
Engineering.....	4,771,738
Natural Resources .....	11,282,280
Road & Bridge .....	23,420,227
Rural Land .....	365,668
Solid Waste Management.....	5,461,958
The Ranch .....	7,584,047

**PUBLIC SAFETY.....\$67,322,479**

Alternative Sentencing Department .....	5,340,882
Animal Control.....	263,973
Community Corrections .....	10,186,016
Coroner .....	1,032,562
Criminal Justice Coordination.....	718,671
District Attorney .....	7,455,025
Sheriff.....	42,325,350

**STRATEGIC LEADERSHIP & ADMIN SVCS ..... \$30,371,642**

Accounting & Reporting.....	2,440,398
Budget Office .....	251,995
Commissioners & County Manager .....	1,444,694
County Attorney .....	1,848,658
Facilities Planning, Management & Operations.....	5,412,537
Human Resources.....	1,862,694
Information Technology .....	16,065,554
Print Shop & Mail .....	394,549
Public Works Administration.....	385,180
Purchasing .....	265,383

**ADOPTED OPERATING BUDGET**

..... \$225,331,718

**DISASTER RESPONSE & RECOVERY**

.....\$33,617,259

**TOTAL ADOPTED BUDGET  
(WITH NON-OPERATIONAL  
GOVERNMENTAL ACCOUNTS)**

..... \$390,299,431

**NON-OPERATIONAL  
GOVERNMENTAL ACCOUNTS.....\$131,350,454**

Accounting & Reporting & Debt Service.....	8,711,994
Budget Office Internal Transfers.....	44,153,563
Facilities Debt Service.....	13,402,247
Fleet Services .....	9,971,083
Self-Insured Benefits Funds .....	20,275,780
Public Trustee .....	456,000
Risk Management.....	2,734,122
Sales Tax Collection & Distribution ....	31,645,665

# UNDERSTANDING YOUR 2015 LOCAL PROPERTY TAXES

..... An example of a \$282,988 residence .....

## 1. HOW 2015 TAXES ARE CALCULATED

NOTE: The County Assessor reappraises all property every two years, tax paid in 2015 is based on non-reappraisal values. For this example, the County Assessor has not increased 2015 property value over 2014.

Actual Value for 2014 taxes	\$282,988
Actual Value for 2015 taxes	\$282,988
State Determined Assessment Rate	x 7.96%
Value for Taxation	\$22,525.85
<b>COMBINED MILL LEVY</b>	<b>x 83.553</b>
Total Taxes Due in 2015:	\$1,882.10

NOTE: A mill equals \$1 on every \$1,000 of taxable value.

## 2. MILL LEVY OF TAXING AUTHORITIES

TAXING AUTHORITY	MILL LEVY
School District	47.989
<b>COUNTY GOV'T SERVICES</b>	<b>21.571</b>
<b>COUNTY ABATEMENTS LEVY</b>	<b>0.137</b>
<b>FOOTHILLS GATEWAY INC.</b>	<b>0.750</b>
<b>COUNTY GOV'T TOTAL</b>	<b>22.458</b>
City Government Services	9.797
Hospital / Health Services	2.167
Other Services (Water, Library, etc.)	1.142
<b>COMBINED MILL LEVY</b>	<b>83.553</b>

NOTE: The above mill levies (except County) are examples. Each tax entity (where the property is located) will announce its mill levy when it adopts its annual budget. Your actual Combined Mill Levy depends on the location of the property.

## 3. WHERE YOUR TAXES GO

	For 2015	Percent
Your School District	\$1,080.99	57.44%
<b>COUNTY GOVERNMENT SERVICES</b>	<b>488.99</b>	<b>25.98%</b>
County for Foothills Gateway Inc.	16.89	0.90%
Your City Government	220.69	11.73%
Your Hospital/Health Services District	48.81	2.59%
Other Districts (Water, Library, etc.)	25.72	1.37%
<b>Total Example Estimated Tax Bill</b>	<b>\$1,882.10</b>	<b>100%</b>

## LARIMER COUNTY ELECTED OFFICES

Assessor . . . . . Steve Miller  
 Clerk & Recorder . . . . . Angela Myers  
 Coroner . . . . . James A. Wilkerson, M.D.  
 District Attorney . . . . . Cliff Riedel  
 Sheriff . . . . . Justin Smith  
 Surveyor . . . . . Chad Washburn  
 Treasurer . . . . . Irene Josey

## LARIMER COUNTY BOARD OF COUNTY COMMISSIONERS



**District #1:**  
**Lew Gaiter III 970-498-7001**

**District #2:**  
**Steve Johnson 970-498-7002**

**District #3:**  
**Tom Donnelly 970-498-7003**

Email the Commissioners at [BOCC@larimer.org](mailto:BOCC@larimer.org).  
 The 2015 Adopted Budget is available: online; at the Budget Office, 200 West Oak St., Fort Collins; and in local libraries.

