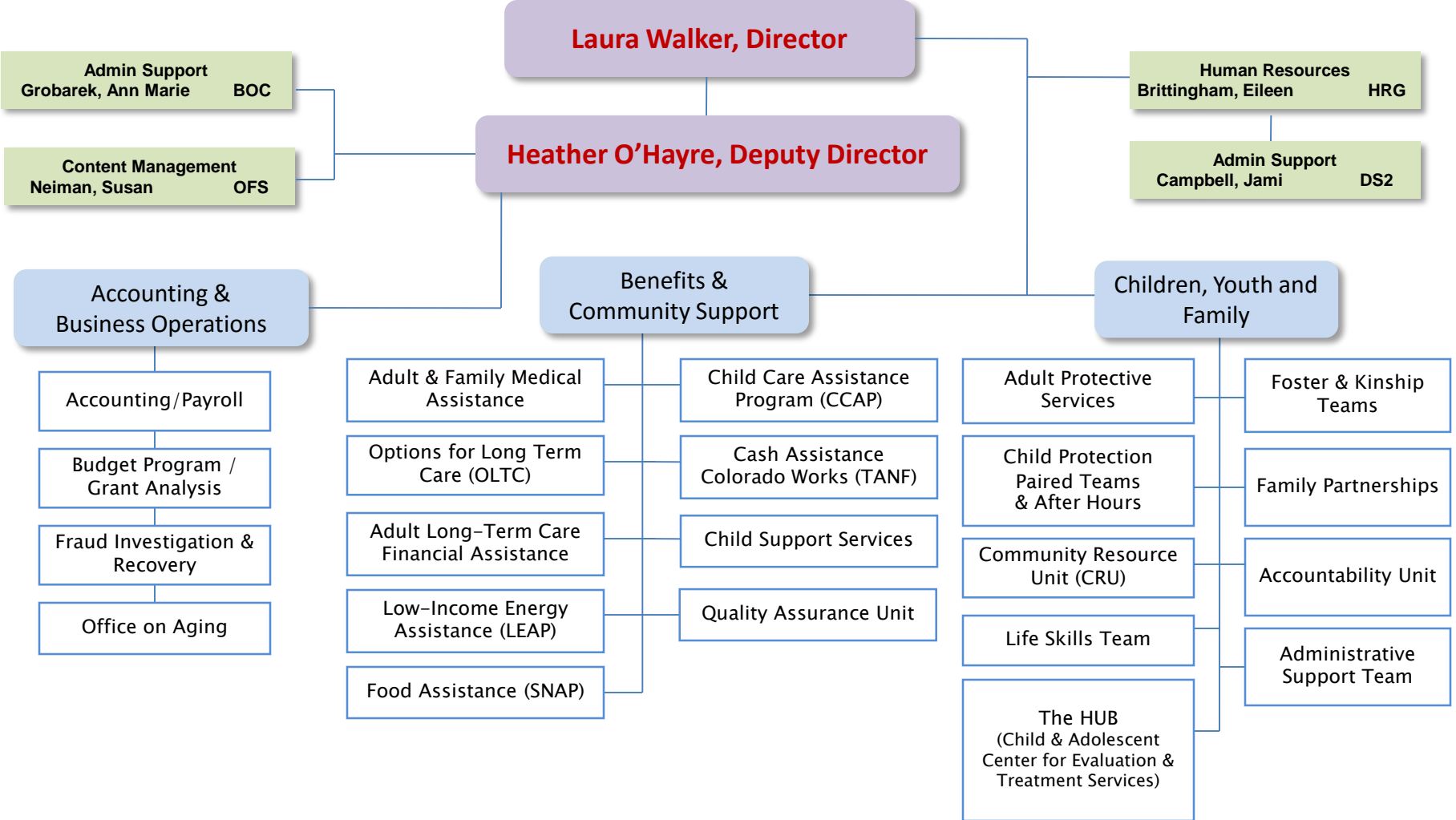


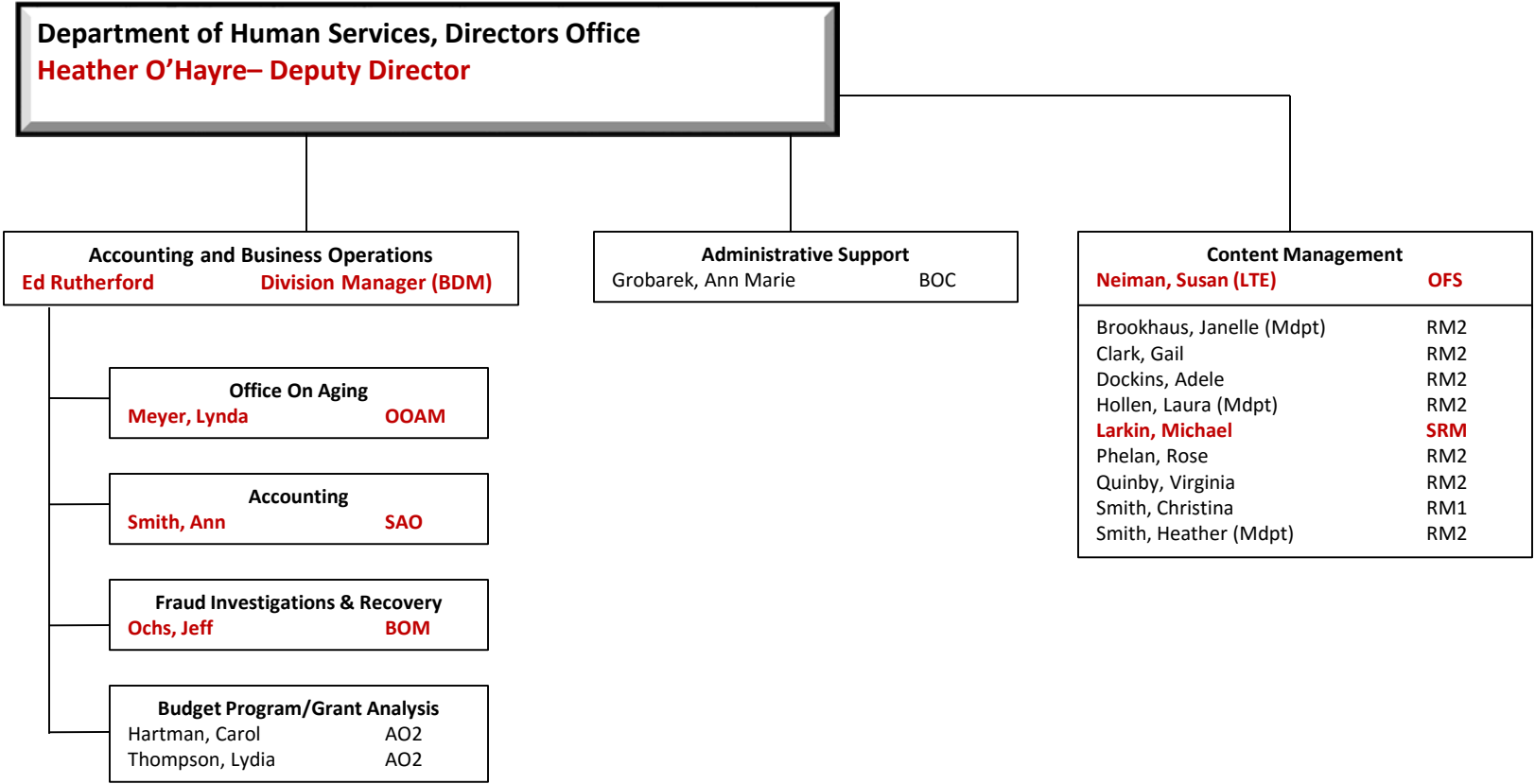
# Department of Human Services Organizational Chart

**Laura Walker, Director**      **Heather O'Hayre, Deputy Director**



Director, Managers, Deputies and Team Leaders are indicated in **red** for screen viewing, **bold** for print

**Department of Human Services Organizational Chart**  
**Laura Walker, Director**                      **Heather O’Hayre, Deputy Director**



Director, Managers, Deputies and Team Leaders are indicated in **red** for screen viewing, **bold** for print

# Department of Human Services Organizational Chart

**Laura Walker, Director**

**Heather O'Hayre, Deputy Director**

## KEY FOR ALL JOB CLASSIFICATIONS

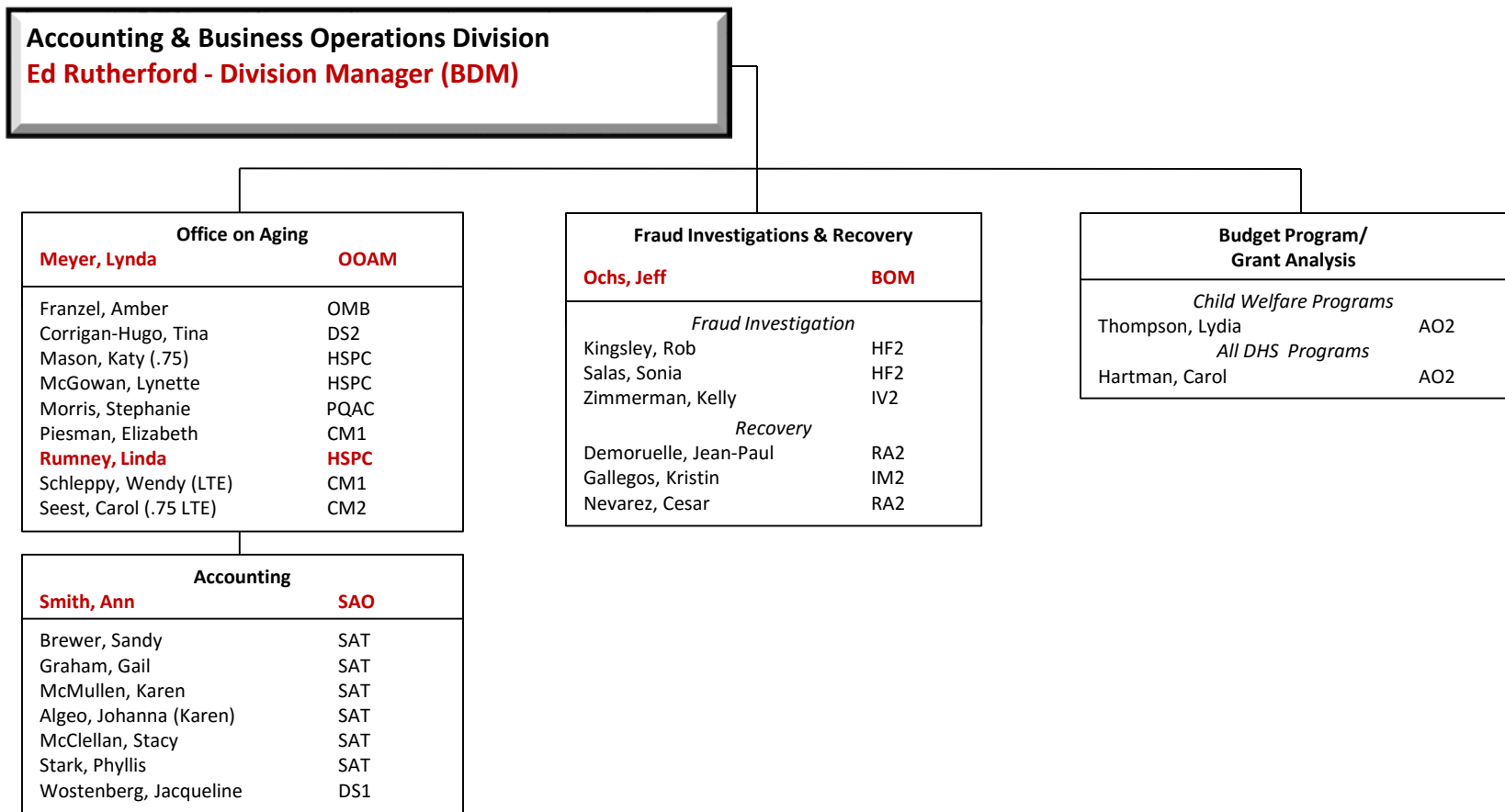
AO 1 or 2	Accountant (I or II)	IMM	Income Maintenance Manager
APT 1 or 2	Assistance Program Technician (I or II)	IS	Intake Specialist
ACSW 1 or 2	Adult Social Caseworker (I or II)	IV 1 or 2	Fraud Investigation Technician (I or II)
AT 1 or 2	Accounting Tech. (I or II)	LSS	Life Skills Specialist
BDM	Business Division Manager	LTCM	Long Term Care Manager
BDDM	Business Deputy Division Manager	OA	Office Assistant
BOC	Business Operations Coordinator	OMB	Ombudsman
BOM	Business Operations Manager	OFS	Office Supervisor
BPDM	Benefits Planning Division Manager	OOAM	Office on Aging Manager
BPDDM	Benefits Planning Deputy Division Manager	PH2NE	Utilization Review Nurse
CM 1 or 2	Case Manager 1 or 2	PQAC	Program Quality Assurance Coordinator
CA	Case Aide	RA 1 or 2	HS Recovery Agent (I or II)
CFSM	Child & Family Services Manager	RM 1 or 2	Records Management Technician (I or II)
CFSDM	Child & Family Services Deputy Manager	SAO	Senior Accountant
CST 1 or 2	Child Support Technician (I or II)	SAA	Senior Administrative Assistant
CSM	Child Support Manager	SAT	Senior Accounting Technician
DS 1 or 2	Department Specialist (I or II)	SCM	Senior Case Manager
EA	Executive Assistant	SSCW	Senior Social Caseworker
HF 1 or 2	HS Fraud Investigator (I or II)	SDS	Senior Department Specialist
HRG	Human Resource Generalist	SIM	Senior Income Maintenance Technician
HSDD	Human Services Deputy Director	SCW 1 or 2	Social Caseworker (I or II)
HSD	Human Services Director	SCWM	Social Caseworker Manager
HSPC	Human Services Program Coordinator	SCT	Senior Child Support Technician
HSTS	Human Services Trauma Specialist	VC	Volunteer Coordinator
HT 1 or 2	Human Services Training Specialist		
IM 1 or 2	Income Maintenance Technician (I or II)		

Director, Managers, Deputies and Team Leaders are indicated in **red** for screen viewing, **bold** for print

# Department of Human Services Organizational Chart

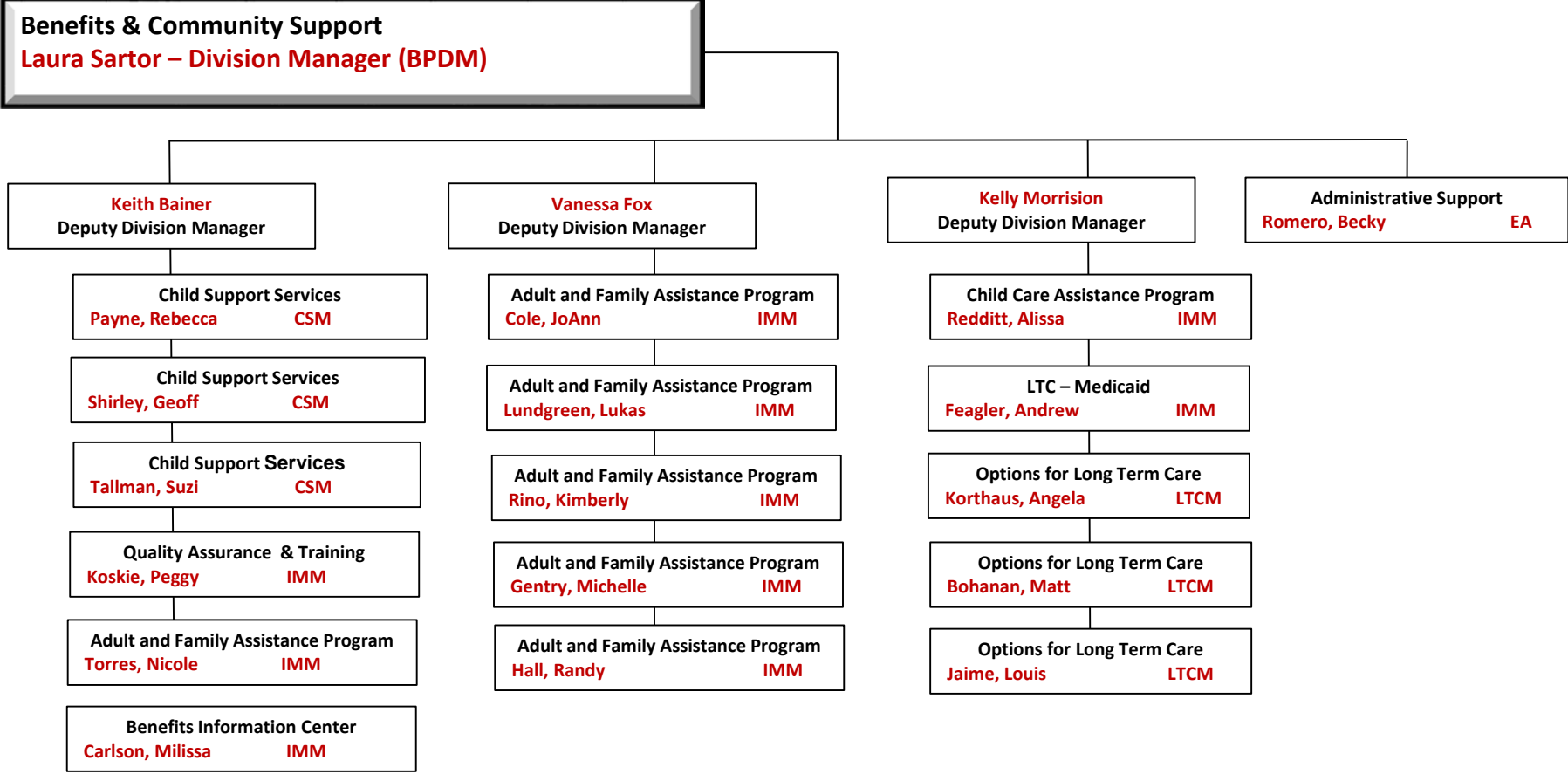
**Laura Walker, Director**

**Heather O'Hayre, Deputy Director**



Director, Managers, Deputies and Team Leaders are indicated in **red** for screen viewing, **bold** for print

**Department of Human Services Organizational Chart**  
**Laura Walker, Director**                      **Heather O’Hayre, Deputy Director**



Director, Managers, Deputies and Team Leaders are indicated in **red** for screen viewing, **bold** for print

# Department of Human Services Organizational Chart

**Laura Walker, Director**

**Heather O'Hayre, Deputy Director**

**Benefits & Community Support**  
**Laura Sartor – Division Manager (BPDM)**

**Keith Bainer – Deputy Division Manager (BPDDM)**

**Benefits Training & Quality Assurance**  
**Koskie, Peggy** IMM

*Benefits Training*

Best, Kendall	HT2
Catron, Brittany	HT1
Franikowski, Jennifer	HT2

*Benefits Quality Assurance*

Barstow, Ryan	SIM
Ferares, Danielle	SIM
Hart, Jennifer	SIM
Howe, Rob	SIM
McNeill, Nicki	SIM

**Child Support Services**  
**Tallman, Suzi** CSM

Billiard, Jennifer	CST1
<b>Johnston, Carleen</b>	<b>SCT</b>
Vacant	CST1
McMullen, Matthew	CST2
Moncivais, Teresea	CST2
Schwartz, Beverly	CST2
Smith, Alisha	CST2
VanWagner, Gail	CST2

**Adult & Family Assistance Program**  
**Torres, Nicole** IMM

Berens, Britney	DS1
Carlson, Joanne	IM2
Collins, Jennifer	IM2
<b>Davies, Michon (EP)</b>	<b>SIM</b>
Halstengard, Kristin	DS1
Hatfield-Evans, Alex	DS2
O'Connell, Kathleen	IM2
Smith, Lacey (Temp)	IM1
Torrez, Simona	IM2
Valdez, Kari	IM2
<b>Vasquez, Nicole</b>	<b>SIM</b>

**Child Support Services**  
**Shirley, Geoff** CSM

Cornejo, Janet	CST2
Flores-Fishburn, Angelita	CST2
Harwood, Melissa	CST2
Kincaid, Vianca	CST2
Perez, Shelley	CST2
<b>Wirth, Karen</b>	<b>SCT</b>
York, Suzanne	CST2

*Child Support Accounting*

Felthager, Joanne	SAT
Jackson, Andrea	SAT
Kutchar, Patsy	SAT

**Child Support Services**  
**Payne, Rebecca** CSM

Drake, Janine	DS2
Hernandez, Marinnda	CST2
Kamm, Autumn	CST2
Keegan, Trelene	CST2
Lucero-Rodriguez, Cindy	CST2
Lynn, Jennifer	CST2
Richards, Kate	CST2
Scrivner, Sarah	CST2

**Adult & Family Assistance Program**  
**Carlson, Milissa** IMM

Ashland, Kathy	IM2
Biondi, Dale	IM1
Camacho, Reyna	IM1
Castaneda, Olivia (LV)	IM2
Farley, Sarah	IM1
Meador, Michel (LTE)	IM1
<b>Mistler, Sue</b>	<b>SIM</b>
Molinari, Kinsey	IM1
Montoya, Kyla (LTE)	IM1
Smith, Jennifer	IM2
Sponberg, Sierra	IM1
Vik, Pamela	IM1
Vacant	IM1
Vacant	IM1

Director, Managers, Deputies and Team Leaders are indicated in **red** for screen viewing, **bold** for print

**Department of Human Services Organizational Chart**  
**Laura Walker, Director**                      **Heather O’Hayre, Deputy Director**

**Benefits & Community Support**  
**Laura Sartor – Division Manager (BPDM)**

**Kelly Morrison– Deputy Division Manager (BPDDM)**

Child Care Assistance Program	
<b>Redditt, Alissa</b>	<b>IMM</b>
DeWitt, Kristen	IM2
Diaz, Isabel	IM2
Graham, Bobbie	IM2
Miller, Renee	IM2
Morales, Violetta	DS2
Vacant	IM1
<b>Riemann, Shawna (temp)</b>	<b>SIM</b>
Vacant	IM1

Options for Long Term Care Medicaid	
<b>Feagler, Andy</b>	<b>IMM</b>
Aragon, Sophia	IM2
Boswell, Michelle	DS2
Brown, Lora	IM2
Deming-Humphrey, Lindsey (temp)	IM2
Jones, Rosa Lee	IM2
Pack, Stephanie	IM2
Smith, Lugene	IM2
Snow, Aubry (LTE)	DS1
Swecker, Mary	IM2
Zitney, Shannan	IM2

Options for Long Term Care	
<b>Bohanan, Matt</b>	<b>LTCM</b>
Boley, Amanda (LTE)	CM2
Bonner, Abigail (LTE)	CM1
Engelking, Shelbie (LTE)	CM2
<b>Friedel, Alyse (LTE)</b>	<b>SCM</b>
Montoya, Britni (LTE)	CM2
Owen, Savannah (LTE)	CM2
<i>Utilization Review Nurse</i>	
Sides, Lindsey (temp)	PN1

Options for Long Term Care	
<b>Korthaus, Angela</b>	<b>LTCM</b>
<b>Burch, Kelly (LTE)</b>	<b>SCM</b>
Lopez, Christina (LTE)	CM2
Mazzella, Kayla (LTE)	OA
Nelson, Lesley (LTE)	CA
O’Grady, Peggy	CM2
Sampson, Brandi (LTE)	CM2
Schmidt, Stephanie (LTE)	CM2
Stucky, Sarah (LTE)	CM2

Options for Long Term Care	
<b>Jaime, Loius</b>	<b>LTCM</b>
Vacant	CM2
Garcia, Denise (LTE)	CM1
Gibson-Raschen, Jessie (LTE)	CM1
Griffith, Julie (LTE)	CM2
Hunter, Margaret (LTE)	CM1
Hunter, Michlle	CM2
Jabs, Kris (LTE)	CM1

Director, Managers, Deputies and Team Leaders are indicated in **red** for screen viewing, **bold** for print

# Department of Human Services Organizational Chart

Laura Walker, Director

Heather O'Hayre, Deputy Director

**Benefits & Community Support**  
**Laura Sartor – Division Manager (BPDM)**

**Vanessa Fox – Deputy Division Manager (BPDDM)**

**Adult & Family Assistance Program**  
**Cole, JoAnn** IMM

Alvarado, Evelyn	IM1
Balfany, Abby	IM2
Bussell, Trisha (LTE)	IM2
Camplin, Stephanie	IM2
Dockins, Tammy	IM2
<b>French, Alex</b>	<b>SIM</b>
Garza, Jennifer	IM2
Madrid, Amanda	IM1
Milner, Allison	IM2
Priddy, Racheal	IM1
Reck, Cathy	IM2
Riddle, Judith	IM2
Vendegna, Andrea (LTE)	IM2

**Adult & Family Assistance Program**  
**Lundgreen, Lukas** IMM

Avalos, Traci	IM2
Barstow, Rebecca	IM2
<b>Brown, Lynn</b>	<b>SIM</b>
Chappelle, Kate	IM1
Giddinge, Susan	IM1
Judd, Theresa	IM2
Kelley, Hollie	IM2
Ortiz, Peggy	IM2
Turman, Dalynne	IM2

**Adult & Family Assistance Program**  
**Rino, Kimberly** IMM

Cole, MaKayla	DS1
Ellis, Sophia	IM1
Forbes, Misty	DS2
Landry, Molly (LTE)	IM1
Lane, Shannon	IM2
Loberg, Taylor	IM2
Lopez, Sonia	IM2
Montenez, Maria	DS1
Phipps, Babbett	IM2
Schmidt, Darla	IM2

**Adult & Family Assistance Program**  
**Hall, Randy** IMM

<b>Aldrete, Maria</b>	<b>SIM</b>
Amidon, Erin	IM2
DiNicola, DeAnna (LTE)	IM2
Duran, Renee (LTE)	IM2
Fox, Stephanie	IM2
Johns, Sharon	IM2
Trezza, Angela (LTE)	IM2
Turner, Deborah	IM2
Williams, Patricia (.5)	IM2

**Adult & Family Assistance Program**  
**Gentry, Michelle** IMM

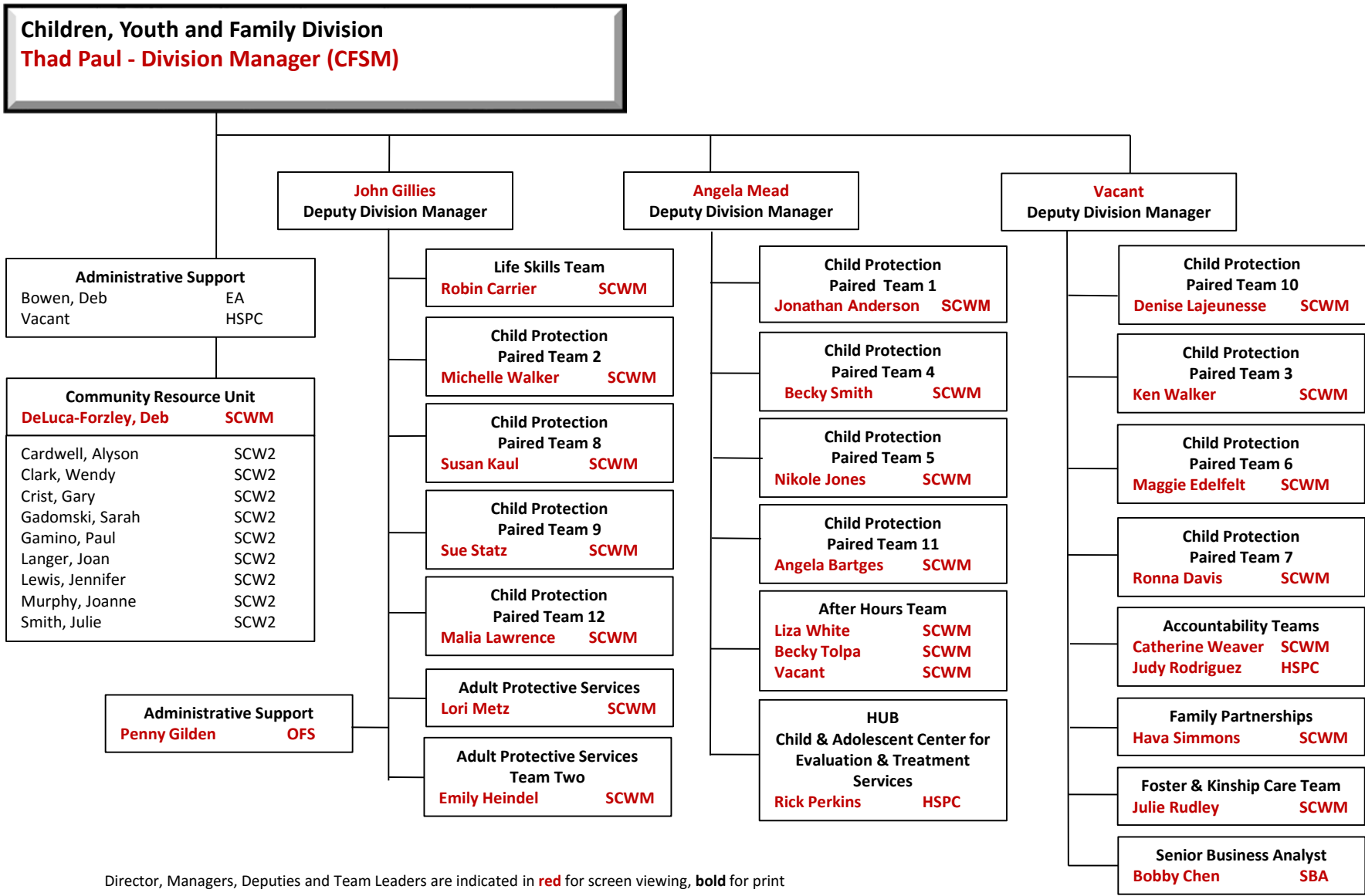
Aldape, Jacqueline	IM1
Barrera-Ceja, Aleta	DS2
Buchanan, Erin	IM1
Holdeman, Kathy	IM2
Krogmeier, Susan	IM2
<b>Moon, Tatiana</b>	<b>SIM</b>
Pickett, John	IM2
Roberson, Ebony	DS2

Director, Managers, Deputies and Team Leaders are indicated in red for screen viewing, bold for print



# Department of Human Services Organizational Chart

**Laura Walker, Director**                      **Heather O'Hayre, Deputy Director**



Director, Managers, Deputies and Team Leaders are indicated in **red** for screen viewing, **bold** for print

# Department of Human Services Organizational Chart

**Laura Walker, Director**                      **Heather O’Hayre, Deputy Director**

**Children, Youth and Family Division**  
**Thad Paul - Division Manager (CFSM)**

**Vacant– Deputy Division Manager (CFSDM)**

<b>Child Protection</b> <b>Walker, Ken</b>	<b>Paired Team 3</b> <b>SCWM</b>
Greeley, Stephanie	SCW2
Hayes, Jessica	SCW2
Jeska, Lesley	SCW2
Johnson, Jessica	SCW1
Pham, Kelly	SCW2
Ribstein, Jared	SCW2

<b>Child Protection</b> <b>Davis, Ronna</b>	<b>Paired Team 7</b> <b>SCWM</b>
Kugler, Michelle	SCW2
Pantle, Elizabeth	SCW2
Rivera, Yasmin	SCW2
Tanner, Kristin	SCW1
Vail, Nicolete	SCW1
Wolz, Amber	SCW2

<b>Senior Business Analyst</b> <b>Chen, Bobby (LTE)</b>	SBA
------------------------------------------------------------	-----

<b>Foster &amp; Kinship Care</b> <b>Rudley, Julie</b>	<b>SCWM</b>
Freese, Erica	SCW2
Fredrickson, Amberly	SCW2
Kammerzell, Katie	SCW2
Laib, Felicia	SCW2
Matthews, Laura	SCW2
Seim, Stacie	SCW2
Swope, Jay (LTE)	SCW2
Worstell, Alex	SCW2
<i>CPR/First Aid trainer</i>	
Zulian, Nikki (temp)	HE

<b>Accountability Team</b> <b>Weaver, Catherine</b>	<b>SCWM</b>
Ayers, Bonney	DS2
Bennett, Sonya	DS2
Mullett-Hosey, Jean (LTE)	DS2
LaPointe, Hannah (LTE)	QAC
Lehman, Devon	QAC
Phillips, Elizabeth	DS2
Starr, Amanda	QAC
Vacant	HSST
<i>Spanish Translators</i>	
DePuky, Silvia (temp)	CA
Puky, Carla (temp)	CA
Wagner, Wayne (temp)	CA

<b>Child Protection</b> <b>Edelfelt, Maggie</b>	<b>Paired Team 6</b> <b>SCWM</b>
Desai, Kush	SCW1
Lenz, Trevor	SCW2
Orona, Elizabeth	SCW2
Richards, Toni	SCW1
Wright, Allison	SCW2

<b>Child Protection</b> <b>Lajeunesse, Denise</b>	<b>Paired Team 10</b> <b>SCWM</b>
Morales, Tiffany	SCW2
Ortler, Jessica	SCW2
Reynolds, Christina	SCW2
Woolett, Charla	SCW2
Van Kooten, Melissa	SCW2

<b>Practice Coach</b> <b>Heckman, Katie</b>	<b>SSCW</b>
------------------------------------------------	-------------

<b>Accountability Team Two</b> <b>Rodriguez, Judy (LTE)</b>	<b>HSPC</b>
Bonda Rust, Pam	DS2
Vacant (LTE .75)	SCW2
Phillips, Tammy	SSCW
<b>Heckman, Katie</b>	<b>SSCW</b>
<b>FAPT Manager</b> <b>Johnson, Lori</b>	<b>SSCW</b>
<b>Practice Coach</b> <b>Leili-Biss, Neshamah</b>	<b>SSCW</b>

<b>Family Partnership</b> <b>Simmons, Hava</b>	<b>SCWM</b>
Eppley, Hannah	SCW2
Gamino, Elizabeth	SCW2
Holman, Jeremy	SCW1
Johnson, Alastair	SCW2
Meriano, Andrea	SCW2
Miller, Sarah	SCW2
Siekmann-Lindenfeld, Rhonda	SCW2
Smith, Arianna	SCW2
Ybarra, Amy	SCW2

Director, Managers, Deputies and Team Leaders are indicated in **red** for screen viewing, **bold** for print

# Department of Human Services Organizational Chart

**Laura Walker, Director**

**Heather O'Hayre, Deputy Director**

**Children, Youth and Family Division**  
**Thad Paul - Division Manager (CFSM)**

**Gillies, John – Deputy Division Manager (CFSDM)**

Child Protection Paired Team 2	
<b>Walker, Michelle</b>	<b>SCWM</b>
Adolph, Kayla	SCW2
Emge, Lydia	SCW1
Jackman, Jay	SCW2
Mekelburg, Riley	SCW1
Ritter, Leandra	SCW1
Strong, Jay	SCW2
Suarez, Sherry	SCW2
Yost, Merideth	SCW2

Child Protection Paired Team 8	
<b>Kaul, Susan</b>	<b>SCWM</b>
Bondhus, Vanessa	SCW2
Delehoy, Miranda	SCW2
Geissier, Tiffany	SCW1
Murray, Alexander	SCW2
Sachleben, Antoinette	SCW2
Sudduth, Jessica	SCW2

Administrative Support	
Pilon, Marci (.5)	DS2

Practice Coach	
<b>Vacant</b>	<b>SSCW</b>

Child Protection Paired Team 9	
<b>Statz, Sue</b>	<b>SCWM</b>
Fallon, Kelsey	SCW2
Keeley, Angela	SCW2
Rankin, Charise	SCW2
Tines, Roxene	SCW2
Walton, Gabriel	SCW1
Wendt, Sarah (LTE)	SCW2

Child Protection Paired Team 12	
<b>Lawrence, Malia</b>	<b>SCWM</b>
Brinks, Laura	SCW2
Fish, Janelle	SCW1
Jordan, Michelle	SCW2
Vacant	SCW2
Tolsma, Pieter	SCW2

Adult Protective Services	
<b>Heindel, Emily</b>	<b>SCWM</b>
Gaona, Nikki	SCW2
Henderson, Adam (LTE)	ASCW1
Kellam, Lydia	ASCW2
Sims, Trisha	ASCW2
Underwood, Katherine	ASCW2

Administrative Support	
<b>Gilden, Penny</b>	<b>OFS</b>
McMillian, Brenda	DS2
Moody, Deb	DS2
Murray, Paula	DS2
Paul, Oriana	DS2
Petersen, Kayla	DS2
Hunter, Jennifer	DS2

Life Skills Team	
<b>Carrier, Robin</b>	<b>SCWM</b>
Boyce, Holly	CA
Branaman, Sydney	CA
Vacant	CA
Lewis, Patricia	CA
Raver, Lauren	CA
Ruebesam, Lore	SCW2
Steele, Lindsey	SCW2
Ulrich-Jones, Christina	VC

Adult Protective Services	
<b>Metz, Lori</b>	<b>SCWM</b>
Barker, Chrsitina	ASCW1
Clough, Matt	ASCW2
Heath, Kathryn	ASCW2
Langford, Emily	ASCW2
Vacant	ASCW2
Nutt, Devynn (LTE)	ASCW1

Director, Managers, Deputies and Team Leaders are indicated in **red** for screen viewing, **bold** for print

# Department of Human Services Organizational Chart

**Laura Walker, Director**                      **Heather O’Hayre, Deputy Director**

**Children, Youth and Family Division**  
**Thad Paul - Division Manager (CFSM)**

**Mead, Angela– Deputy Division Manager (CFSDM)**

**Child Protection Paired Team 1**

**Anderson, Jonathan**                      **SCWM**

Caroli, Emma	SCW2
Vacant	SCW2
Erickson, Brandon	SCW1
Mitchell, Chelsea	SCW1
Peterson, Taylor (LTE)	SCW1
Stutzman, Savannah	SCW2
Lippert-Wallace, Sara	SCW2

**Child Protection Paired Team 5**

**Jones, Nikole**                      **SCWM**

Beaudry-Staats, Susan	SCW2
Cullen, Kelsea	SCW2
Henderson, Kyra	SCW2
Jacobo, Jillian	SCW1
Rogers, Gabriella	SCW2
Ward, Jean	SCW2

**Child Protection After Hours Team 1**

**Vacant**                      **SCWM**

**Child Protection After Hours Team 3**

**White, Liza**                      **SCWM**

Flachs, Amy (temp)	SCW
Grantham, Kimberli (temp)	SCW
Killerman, Addie (temp)	SCW
Romano, Lauren (temp)	IS
<b>HUB</b>	
Hansell, Hannah (temp)	IS
Wichman, Jessica	IS

**Child Protection Paired Team 4**

**Smith, Becky**                      **SCWM**

Avila, CaSandra	SCW2
Edwards, Kelsey (temp)	CA
(Spanish Translator)	
Gregerson, Meghan (temp)	CA
Johnson, Lori	SCW2
Orozco, Amanda	SCW2
Troudt, Nicole	SCW2
Zadra, Meghan (temp)	CA

**Child Protection Paired Team 11**

**Bartges, Angela**                      **SCWM**

Davis, Nicole	SCW1
Fotsch, Andrea	SCW2
Lorenzen, Michelle	SCW2
Mai, Heather	SCW1
Scheid, Jessica	SCW2
Weisser, Kimberly	SCW2

**HUB**

**Child & Adolescent Center for Evaluation & Treatment Services**

**Perkins, Rick**                      **PC**

Andreen, Jesy	IS
Brawley, Mykel	IS
Gregerson, Meghan	IS
Harper, Cynthia	IS
Julian, Sarah	SCW
Law, Melanie	IS
Kapps, Katie	IS
Nededog, Patricia (temp)	IS
Pagnotta, Jenna	IS
Pando, Deb	IS
Sanfilippo, Lesley	IS
Sapper, Samantha	IS
Tamai, Camille	IS
Volzke, Amber	IS
Walls, Courtney	IS

**Child Protection After Hours Team 2**

**Tolpa, Becky**                      **SCWM**

Harnig, Brandie (temp)	SCW
McFarlane, Andrea(temp)	SCW
Outland, Pearl (temp)	SCW
Zakaria, Corine (temp)	SCW
<b>HUB</b>	
Dahl, Hannah	IS
Yearous, Karen	SCW2

Director, Managers, Deputies and Team Leaders are indicated in **red** for screen viewing, **bold** for print